



## Granddaddy Purple

Sample ID: G9L0008-01 Matrix: Useable Marijuana

Test ID: 1A401030000F105000003479

Source ID: 1A401030000F105000003478

Date Sampled: 11/26/19 Date Accepted: 11/26/19

Harvest/Prod. Date: 10/7/19

*Epic Family Farms*

### Results at a Glance

Total THC : 21.21 %

Total CBD : <LOQ (0.0115% dry) %

Pesticides : PASS

Water Activity : 0.46 PASS

Percent Moisture : 7.08 % PASS

Total Terpenes : 5.444 % PASS

*Russell Kuhfeld*

Russell Kuhfeld  
Quality Officer - 12/6/2019



### Granddaddy Purple

Sample ID: G9L0008-01 Matrix: Useable Marijuana

Test ID: 1A401030000F105000003479

Source ID: 1A401030000F105000003478

Date Sampled: 11/26/19

Date Accepted: 11/26/19

Harvest/Prod. Date: 10/7/19

**Epic Family Farms**

### Potency Analysis

Date/Time Extracted: 12/02/19 12:03

Analysis Method/SOP: 215

Batch Identification: 1949010

	LOQ (%)	% by Wt.	mg/g	Cannabinoids Profile								
Total THC	0.0509	21.21	212.1	<table border="1"> <tr><td>THCA</td><td>22.7</td></tr> <tr><td>delta 9-THC</td><td>1.3</td></tr> <tr><td>CBGA</td><td>0.4</td></tr> <tr><td>Total</td><td>24.4</td></tr> </table>	THCA	22.7	delta 9-THC	1.3	CBGA	0.4	Total	24.4
THCA	22.7											
delta 9-THC	1.3											
CBGA	0.4											
Total	24.4											
Total CBD	0.0115	< LOQ	< LOQ									
THCA	0.0162	22.73	227.3									
delta 9-THC	0.0509	1.276	12.76									
delta 8-THC	0.0252	< LOQ	< LOQ									
Exo-THC	0.0224	< LOQ	< LOQ									
THCV	0.0283	< LOQ	< LOQ									
THCVA	0.0106	< LOQ	< LOQ									
CBD	0.0087	< LOQ	< LOQ									
CBDA	0.0115	< LOQ	< LOQ									
CBDV	0.0280	< LOQ	< LOQ									
CBDVA	0.0092	< LOQ	< LOQ									
CBN	0.0168	< LOQ	< LOQ									
CBG	0.0045	< LOQ	< LOQ									
CBGA	0.0045	0.3745	3.745									
CBC	0.0501	< LOQ	< LOQ									
<b>Total Cannabinoids</b>		<b>24.38</b>	<b>243.8</b>									

### Water Activity

Date/Time Extracted: 12/03/19 16:11

Analysis Method/SOP: 102

Water Activity: 0.46 at 24°C

### Moisture

Date/Time Extracted: 12/03/19 16:16

Analysis Method/SOP: 103

Moisture: 7.08 %

Potency Results are reported on a dry weight basis.

Total THC = delta 9-THC + (THCA \* 0.877)

Total CBD = CBD + (CBDA \* 0.877)

For Potency only delta 9-THC, THCA, CBD, CBDA are ORELAP accredited analytes.

Water Activity Action Level is 0.65. Results above 0.65 fail state testing requirements and will be highlighted **Red**.

Russell Kuhfeld  
Quality Officer - 12/6/2019



### Granddaddy Purple

Sample ID: G9L0008-01 Matrix: Useable Marijuana

Test ID: 1A401030000F105000003479

Source ID: 1A401030000F105000003478

Date Sampled: 11/26/19

Date Accepted: 11/26/19

Harvest/Prod. Date: 10/7/19

**Epic Family Farms**

### Terpene Analysis

Date/Time Extracted: 12/02/19 12:03

Analysis Method/SOP: 204

Monoterpenes	%	mg/g	Monoterpenes	%	mg/g
Camphene	< LOQ	< LOQ	Camphor	< LOQ	< LOQ
3-Carene	< LOQ	< LOQ	alpha-Cedrene	< LOQ	< LOQ
Cedrol	< LOQ	< LOQ	Endo-fenchyl alcohol	< LOQ	< LOQ
Eucalyptol	< LOQ	< LOQ	Fenchone	< LOQ	< LOQ
Geraniol	< LOQ	< LOQ	Geranyl acetate	< LOQ	< LOQ
Hexahydrothymol	< LOQ	< LOQ	Isoborneol	< LOQ	< LOQ
Isopulegol	< LOQ	< LOQ	Limonene	< LOQ	< LOQ
Linalool	0.1112	1.112	p-Mentha-1,5-diene	< LOQ	< LOQ
beta-Myrcene	3.366	33.66	Ocimene	0.3112	3.112
alpha-Pinene	0.5487	5.487	beta-Pinene	0.1089	1.089
Pulegone	< LOQ	< LOQ	Sabinene	< LOQ	< LOQ
Sabinene hydrate	< LOQ	< LOQ	gamma-Terpinene	< LOQ	< LOQ
alpha-Terpinene	< LOQ	< LOQ	Terpineol	< LOQ	< LOQ
Terpinolene	< LOQ	< LOQ	B Y-Terpineol	< LOQ	< LOQ
Nerol	< LOQ	< LOQ	A-Terpineol	< LOQ	< LOQ
Borneol	< LOQ	< LOQ	Ocimene isomer II	0.2795	2.795
Ocimene isomer I	0.03173	0.3173			
Sesquiterpenes	%	mg/g	Sesquiterpenes	%	mg/g
alpha-Bisabolol	0.04437	0.4437	beta-Caryophyllene	0.5737	5.737
Caryophyllene Oxide	0.03282	0.3282	Guaiol	< LOQ	< LOQ
alpha-Humulene	0.1333	1.333	trans-Nerolidol	< LOQ	< LOQ
Valencene	< LOQ	< LOQ	cis-Nerolidol	0.2137	2.137
<b>Total Terpenes</b>	<b>5.444</b>	<b>54.44</b>			

<LOQ - Results below the Limit of Quantitation - Terpenes profile/analysis are not accredited to ORELAP TNI 2009 Quality Standards.

Russell Kuhfeld  
Quality Officer - 12/6/2019



### Granddaddy Purple

Sample ID: G9L0008-01 Matrix: Useable Marijuana

Test ID: 1A401030000F105000003479

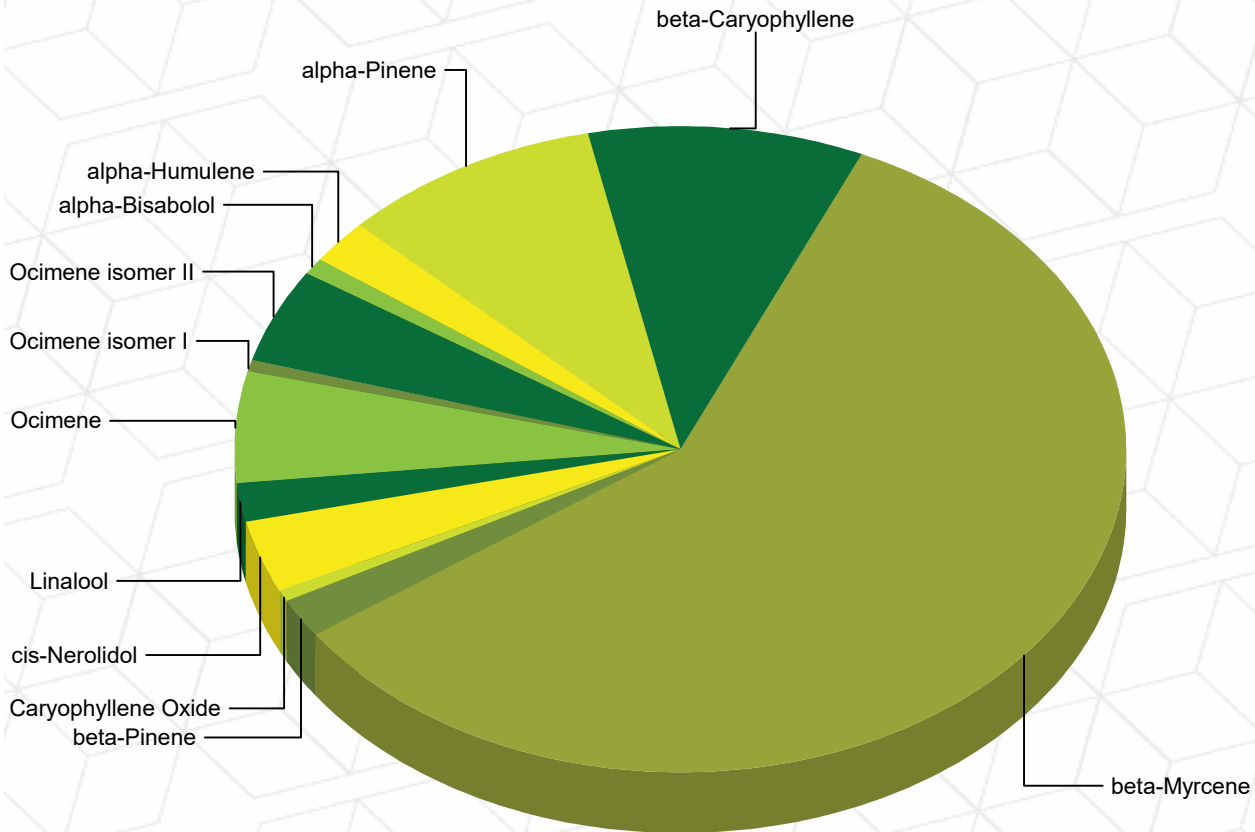
Source ID: 1A401030000F105000003478

Date Sampled: 11/26/19 Date Accepted: 11/26/19

Harvest/Prod. Date: 10/7/19

*Epic Family Farms*

### Terpene Profile



Percentage of Total Terpenes Identified

*Russell Kuhfeld*

Russell Kuhfeld  
Quality Officer - 12/6/2019



### Granddaddy Purple

Sample ID: G9L0008-01 Matrix: Useable Marijuana

Test ID: 1A401030000F105000003479

Source ID: 1A401030000F105000003478

Date Sampled: 11/26/19

Date Accepted: 11/26/19

Harvest/Prod. Date: 10/7/19

**Epic Family Farms**

### Pesticide Analysis in ppm

Date/Time Extracted: 12/04/19 10:20

Analysis Method/SOP: 203

Analyte	Result	Action Level	LOD	LOQ	Units	Analyte	Result	Action Level	LOD	LOQ	Units
Abamectin	< LOQ	0.5		0.04	ppm	Acephate	< LOQ	0.4		0.04	ppm
Acequinocyl	< LOQ	2		0.04	ppm	Acetamiprid	< LOQ	0.2		0.04	ppm
Aldicarb	< LOQ	0.4		0.04	ppm	Azoxystrobin	< LOQ	0.2		0.04	ppm
Bifenazate	< LOQ	0.2		0.04	ppm	Bifenthrin	< LOQ	0.2		0.04	ppm
Boscalid	< LOQ	0.4		0.04	ppm	Carbaryl	< LOQ	0.2		0.04	ppm
Carbofuran	< LOQ	0.2		0.04	ppm	Chlorantraniliprole	< LOQ	0.2		0.04	ppm
Chlorfenapyr	< LOQ	1		0.04	ppm	Chlorpyrifos	< LOQ	0.2		0.04	ppm
Clofentezine	< LOQ	0.2		0.04	ppm	Cyfluthrin	< LOQ	1		0.04	ppm
Cypermethrin	< LOQ	1		0.04	ppm	Daminozide	< LOQ	1		0.04	ppm
DDVP (Dichlorvos)	< LOQ	1		0.04	ppm	Diazinon	< LOQ	0.2		0.04	ppm
Dimethoate	< LOQ	0.2		0.04	ppm	Ethoprophos	< LOQ	0.2		0.04	ppm
Etofenprox	< LOQ	0.4		0.04	ppm	Etoxazole	< LOQ	0.2		0.04	ppm
Fenoxycarb	< LOQ	0.2		0.04	ppm	Fenpyroximate	< LOQ	0.4		0.04	ppm
Fipronil	< LOQ	0.4		0.04	ppm	Fonicamid	< LOQ	1		0.04	ppm
Fludioxonil	< LOQ	0.4		0.04	ppm	Hexythiazox	< LOQ	1		0.04	ppm
Imazalil	< LOQ	0.2		0.04	ppm	Imidacloprid	< LOQ	0.4		0.04	ppm
Kresoxim-methyl	< LOQ	0.4		0.04	ppm	Malathion	< LOQ	0.2		0.04	ppm
Metalaxyl	< LOQ	0.2		0.04	ppm	Methiocarb	< LOQ	0.2		0.04	ppm
Methomyl	< LOQ	0.4		0.04	ppm	Methyl parathion	< LOQ	0.2		0.04	ppm
MGK-264	< LOQ	0.2		0.04	ppm	Myclobutanil	< LOQ	0.2		0.04	ppm
Naled	< LOQ	0.5		0.04	ppm	Oxamyl	< LOQ	1		0.04	ppm
Paclobutrazol	< LOQ	0.4		0.04	ppm	Permethrins	< LOQ	0.2		0.04	ppm
Phosmet	< LOQ	0.2		0.04	ppm	Piperonyl butoxide	< LOQ	2		0.1	ppm
Prallethrin	< LOQ	0.2		0.04	ppm	Propiconazole	< LOQ	0.4		0.04	ppm
Propoxur	< LOQ	0.2		0.04	ppm	Pyrethrins	< LOQ	1		0.1	ppm
Pyridaben	< LOQ	0.2		0.04	ppm	Spinosad	< LOQ	0.2		0.04	ppm
Spiromesifen	< LOQ	0.2		0.04	ppm	Spirotetramat	< LOQ	0.2		0.04	ppm
Spiroxamine	< LOQ	0.4		0.04	ppm	Tebuconazole	< LOQ	0.4		0.04	ppm
Thiacloprid	< LOQ	0.2		0.04	ppm	Thiamethoxam	< LOQ	0.2		0.04	ppm
Trifloxystrobin	< LOQ	0.2		0.04	ppm						

ND - Compound not detected

Results above the Action Level fail state testing requirements and will be highlighted **Red**.

Russell Kuhfeld  
Quality Officer - 12/6/2019



### Quality Control Potency

Batch: 1949010 - 215-Useable

Blank(1949010-BLK1)						
Analyte	Result	LOQ	Units	%Recovery Limits	Extracted	Analyzed
THCA	< LOQ	0.0151	%		12/02/19 12:03	12/02/19 18:49
delta 9-THC	< LOQ	0.0473	%		12/02/19 12:03	12/02/19 18:49
delta 8-THC	< LOQ	0.0234	%		12/02/19 12:03	12/02/19 18:49
Exo-THC	< LOQ	0.0208	%		12/02/19 12:03	12/02/19 18:49
THCV	< LOQ	0.0263	%		12/02/19 12:03	12/02/19 18:49
THCVA	< LOQ	0.0099	%		12/02/19 12:03	12/02/19 18:49
CBD	< LOQ	0.0081	%		12/02/19 12:03	12/02/19 18:49
CBDA	< LOQ	0.0107	%		12/02/19 12:03	12/02/19 18:49
CBDV	< LOQ	0.0260	%		12/02/19 12:03	12/02/19 18:49
CBDVA	< LOQ	0.0086	%		12/02/19 12:03	12/02/19 18:49
CBN	< LOQ	0.0156	%		12/02/19 12:03	12/02/19 18:49
CBG	< LOQ	0.0042	%		12/02/19 12:03	12/02/19 18:49
CBGA	< LOQ	0.0042	%		12/02/19 12:03	12/02/19 18:49
CBC	< LOQ	0.0465	%		12/02/19 12:03	12/02/19 18:49

Reference(1949010-SRM1)						
Analyte	% Recovery	LOQ	Units	%Recovery Limits	Extracted	Analyzed
THCA	98.3	0.0151	%	80-120	12/02/19 12:03	12/02/19 19:12
delta 9-THC	104	0.0473	%	80-120	12/02/19 12:03	12/02/19 19:12
CBD	103	0.0081	%	80-120	12/02/19 12:03	12/02/19 19:12
CBDA	100	0.0107	%	80-120	12/02/19 12:03	12/02/19 19:12

### Pesticide Analysis

Batch: 1949048 - 203

Blank(1949048-BLK1)						
Analyte	Result	LOQ	Units	%Recovery Limits	Extracted	Analyzed
Abamectin	< LOQ	0.04	ppm		12/04/19 10:20	12/05/19 21:38
DDVP (Dichlorvos)	< LOQ	0.04	ppm		12/04/19 10:20	12/06/19 10:04
Acephate	< LOQ	0.04	ppm		12/04/19 10:20	12/05/19 21:38
Acequinocyl	< LOQ	0.04	ppm		12/04/19 10:20	12/05/19 21:38
Acetamiprid	< LOQ	0.04	ppm		12/04/19 10:20	12/05/19 21:38
Aldicarb	< LOQ	0.04	ppm		12/04/19 10:20	12/05/19 21:38
Azoxystrobin	< LOQ	0.04	ppm		12/04/19 10:20	12/05/19 21:38
Bifenazate	< LOQ	0.04	ppm		12/04/19 10:20	12/05/19 21:38
Bifenthrin	< LOQ	0.04	ppm		12/04/19 10:20	12/06/19 10:04
Boscalid	< LOQ	0.04	ppm		12/04/19 10:20	12/06/19 10:04
Carbaryl	< LOQ	0.04	ppm		12/04/19 10:20	12/05/19 21:38
Carbofuran	< LOQ	0.04	ppm		12/04/19 10:20	12/05/19 21:38
Chlorantraniliprole	< LOQ	0.04	ppm		12/04/19 10:20	12/05/19 21:38

Russell Kuhfeld  
Quality Officer - 12/6/2019



### Quality Control Pesticide Analysis (Continued)

Batch: 1949048 - 203 (Continued)

Blank(1949048-BLK1)						
Analyte	Result	LOQ	Units	%Recovery Limits	Extracted	Analyzed
Chlorfenapyr	< LOQ	0.04	ppm		12/04/19 10:20	12/06/19 10:04
Chlorpyrifos	< LOQ	0.04	ppm		12/04/19 10:20	12/06/19 10:04
Clofentezine	< LOQ	0.04	ppm		12/04/19 10:20	12/05/19 21:38
Cyfluthrin	< LOQ	0.04	ppm		12/04/19 10:20	12/06/19 10:04
Cypermethrin	< LOQ	0.04	ppm		12/04/19 10:20	12/06/19 10:04
Daminozide	< LOQ	0.04	ppm		12/04/19 10:20	12/05/19 21:38
Diazinon	< LOQ	0.04	ppm		12/04/19 10:20	12/05/19 21:38
Dimethoate	< LOQ	0.04	ppm		12/04/19 10:20	12/05/19 21:38
Ethoprophos	< LOQ	0.04	ppm		12/04/19 10:20	12/05/19 21:38
Etofenprox	< LOQ	0.04	ppm		12/04/19 10:20	12/05/19 21:38
Etoxazole	< LOQ	0.04	ppm		12/04/19 10:20	12/05/19 21:38
Fenoxycarb	< LOQ	0.04	ppm		12/04/19 10:20	12/05/19 21:38
Fenpyroximate	< LOQ	0.04	ppm		12/04/19 10:20	12/05/19 21:38
Fipronil	< LOQ	0.04	ppm		12/04/19 10:20	12/06/19 10:04
Flonicamid	< LOQ	0.04	ppm		12/04/19 10:20	12/05/19 21:38
Fludioxonil	< LOQ	0.04	ppm		12/04/19 10:20	12/06/19 10:04
Hexythiazox	< LOQ	0.04	ppm		12/04/19 10:20	12/05/19 21:38
Imazalil	< LOQ	0.04	ppm		12/04/19 10:20	12/05/19 21:38
Imidacloprid	< LOQ	0.04	ppm		12/04/19 10:20	12/05/19 21:38
Kresoxim-methyl	< LOQ	0.04	ppm		12/04/19 10:20	12/06/19 10:04
Malathion	< LOQ	0.04	ppm		12/04/19 10:20	12/06/19 10:04
Metalaxyl	< LOQ	0.04	ppm		12/04/19 10:20	12/05/19 21:38
Methiocarb	< LOQ	0.04	ppm		12/04/19 10:20	12/05/19 21:38
Methomyl	< LOQ	0.04	ppm		12/04/19 10:20	12/05/19 21:38
Methyl parathion	< LOQ	0.04	ppm		12/04/19 10:20	12/06/19 10:04
MGK-264	< LOQ	0.04	ppm		12/04/19 10:20	12/06/19 10:04
Myclobutanil	< LOQ	0.04	ppm		12/04/19 10:20	12/05/19 21:38
Naled	< LOQ	0.04	ppm		12/04/19 10:20	12/05/19 21:38
Oxamyl	< LOQ	0.04	ppm		12/04/19 10:20	12/05/19 21:38
Paclobutrazol	< LOQ	0.04	ppm		12/04/19 10:20	12/05/19 21:38
Permethrins	< LOQ	0.04	ppm		12/04/19 10:20	12/05/19 21:38
Phosmet	< LOQ	0.04	ppm		12/04/19 10:20	12/05/19 21:38
Piperonyl butoxide	< LOQ	0.1	ppm		12/04/19 10:20	12/05/19 21:38
Prallethrin	< LOQ	0.04	ppm		12/04/19 10:20	12/05/19 21:38
Propiconazole	< LOQ	0.04	ppm		12/04/19 10:20	12/06/19 10:04
Propoxur	< LOQ	0.04	ppm		12/04/19 10:20	12/05/19 21:38
Pyrethrins	< LOQ	0.1	ppm		12/04/19 10:20	12/05/19 21:38
Pyridaben	< LOQ	0.04	ppm		12/04/19 10:20	12/05/19 21:38

Russell Kuhfeld  
Quality Officer - 12/6/2019



### Quality Control Pesticide Analysis (Continued)

Batch: 1949048 - 203 (Continued)

Blank(1949048-BLK1)						
Analyte	Result	LOQ	Units	%Recovery Limits	Extracted	Analyzed
Spinosad	< LOQ	0.04	ppm		12/04/19 10:20	12/05/19 21:38
Spiromesifen	< LOQ	0.04	ppm		12/04/19 10:20	12/05/19 21:38
Spirotetramat	< LOQ	0.04	ppm		12/04/19 10:20	12/05/19 21:38
Spiroxamine	< LOQ	0.04	ppm		12/04/19 10:20	12/05/19 21:38
Tebuconazole	< LOQ	0.04	ppm		12/04/19 10:20	12/05/19 21:38
Thiacloprid	< LOQ	0.04	ppm		12/04/19 10:20	12/05/19 21:38
Thiamethoxam	< LOQ	0.04	ppm		12/04/19 10:20	12/05/19 21:38
Trifloxystrobin	< LOQ	0.04	ppm		12/04/19 10:20	12/05/19 21:38

LCS(1949048-BS1)						
Analyte	% Recovery	LOQ	Units	%Recovery Limits	Extracted	Analyzed
Abamectin	109	0.04	ppm	70-130	12/04/19 10:20	12/05/19 22:01
DDVP (Dichlorvos)	119	0.04	ppm	70-130	12/04/19 10:20	12/06/19 10:27
Acephate	101	0.04	ppm	70-130	12/04/19 10:20	12/05/19 22:01
Acequinocyl	89.2	0.04	ppm	52-97	12/04/19 10:20	12/05/19 22:01
Acetamiprid	105	0.04	ppm	70-130	12/04/19 10:20	12/05/19 22:01
Aldicarb	107	0.04	ppm	70-130	12/04/19 10:20	12/05/19 22:01
Azoxystrobin	111	0.04	ppm	70-130	12/04/19 10:20	12/05/19 22:01
Bifenazate	91.3	0.04	ppm	70-130	12/04/19 10:20	12/05/19 22:01
Bifenthrin	102	0.04	ppm	70-130	12/04/19 10:20	12/06/19 10:27
Boscalid	94.5	0.04	ppm	70-130	12/04/19 10:20	12/06/19 10:27
Carbaryl	113	0.04	ppm	70-130	12/04/19 10:20	12/05/19 22:01
Carbofuran	111	0.04	ppm	70-130	12/04/19 10:20	12/05/19 22:01
Chlorantraniliprole	139	0.04	ppm	70-130	12/04/19 10:20	12/05/19 22:01
Chlorfenapyr	104	0.04	ppm	70-130	12/04/19 10:20	12/06/19 10:27
Chlorpyrifos	104	0.04	ppm	70-130	12/04/19 10:20	12/06/19 10:27
Clofentezine	57.5	0.04	ppm	14.4-62.3	12/04/19 10:20	12/05/19 22:01
Cyfluthrin	92.0	0.04	ppm	70-130	12/04/19 10:20	12/06/19 10:27
Cypermethrin	66.0	0.04	ppm	70-130	12/04/19 10:20	12/06/19 10:27
Daminozide	4.95	0.04	ppm	0-100	12/04/19 10:20	12/05/19 22:01
Diazinon	115	0.04	ppm	70-130	12/04/19 10:20	12/05/19 22:01
Dimethoate	110	0.04	ppm	70-130	12/04/19 10:20	12/05/19 22:01
Ethoprophos	111	0.04	ppm	70-130	12/04/19 10:20	12/05/19 22:01
Etofenprox	111	0.04	ppm	70-130	12/04/19 10:20	12/05/19 22:01
Etoxazole	101	0.04	ppm	70-130	12/04/19 10:20	12/05/19 22:01
Fenoxycarb	118	0.04	ppm	70-130	12/04/19 10:20	12/05/19 22:01
Fenpyroximate	104	0.04	ppm	50-100	12/04/19 10:20	12/05/19 22:01
Fipronil	98.1	0.04	ppm	70-130	12/04/19 10:20	12/06/19 10:27
Fonicamid	113	0.04	ppm	70-130	12/04/19 10:20	12/05/19 22:01

Russell Kuhfeld  
Quality Officer - 12/6/2019





### Quality Control Pesticide Analysis (Continued)

Batch: 1949048 - 203 (Continued)

LCS(1949048-BS1)						
Analyte	% Recovery	LOQ	Units	%Recovery Limits	Extracted	Analyzed
Fludioxonil	77.5	0.04	ppm	70-130	12/04/19 10:20	12/06/19 10:27
Hexythiazox	99.6	0.04	ppm	70-130	12/04/19 10:20	12/05/19 22:01
Imazalil	77.2	0.04	ppm	58-96.4	12/04/19 10:20	12/05/19 22:01
Imidacloprid	105	0.04	ppm	70-130	12/04/19 10:20	12/05/19 22:01
Kresoxim-methyl	106	0.04	ppm	70-130	12/04/19 10:20	12/06/19 10:27
Malathion	110	0.04	ppm	70-130	12/04/19 10:20	12/06/19 10:27
Metalaxyl	107	0.04	ppm	70-130	12/04/19 10:20	12/05/19 22:01
Methiocarb	107	0.04	ppm	70-130	12/04/19 10:20	12/05/19 22:01
Methomyl	109	0.04	ppm	70-130	12/04/19 10:20	12/05/19 22:01
Methyl parathion	77.5	0.04	ppm	70-130	12/04/19 10:20	12/06/19 10:27
MGK-264	94.8	0.04	ppm	70-130	12/04/19 10:20	12/06/19 10:27
Myclobutanil	107	0.04	ppm	70-130	12/04/19 10:20	12/05/19 22:01
Naled	97.8	0.04	ppm	36-93	12/04/19 10:20	12/05/19 22:01
Oxamyl	108	0.04	ppm	70-130	12/04/19 10:20	12/05/19 22:01
Paclobutrazol	113	0.04	ppm	70-130	12/04/19 10:20	12/05/19 22:01
Permethrins	124	0.04	ppm	70-130	12/04/19 10:20	12/05/19 22:01
Phosmet	108	0.04	ppm	70-130	12/04/19 10:20	12/05/19 22:01
Piperonyl butoxide	87.3	0.1	ppm	70-130	12/04/19 10:20	12/05/19 22:01
Prallethrin	118	0.04	ppm	70-130	12/04/19 10:20	12/05/19 22:01
Propiconazole	95.1	0.04	ppm	70-130	12/04/19 10:20	12/06/19 10:27
Propoxur	109	0.04	ppm	70-130	12/04/19 10:20	12/05/19 22:01
Pyrethrins	105	0.1	ppm	70-130	12/04/19 10:20	12/05/19 22:01
Pyridaben	99.1	0.04	ppm	70-130	12/04/19 10:20	12/05/19 22:01
Spinosad	90.2	0.04	ppm	45-114	12/04/19 10:20	12/05/19 22:01
Spiromesifen	106	0.04	ppm	70-130	12/04/19 10:20	12/05/19 22:01
Spirotetramat	102	0.04	ppm	70-130	12/04/19 10:20	12/05/19 22:01
Spiroxamine	72.4	0.04	ppm	55-95	12/04/19 10:20	12/05/19 22:01
Tebuconazole	111	0.04	ppm	70-130	12/04/19 10:20	12/05/19 22:01
Thiacloprid	107	0.04	ppm	70-130	12/04/19 10:20	12/05/19 22:01
Thiamethoxam	102	0.04	ppm	70-130	12/04/19 10:20	12/05/19 22:01
Trifloxystrobin	107	0.04	ppm	70-130	12/04/19 10:20	12/05/19 22:01

### Terpene Analysis

Batch: 1949010 - 215-Useable

Blank(1949010-BLK1)						
Analyte	Result	LOQ	Units	%Recovery Limits	Extracted	Analyzed
alpha-Bisabolol	< LOQ	4.000E-4	%		12/02/19 12:03	12/03/19 08:13
Camphene	< LOQ	4.000E-4	%		12/02/19 12:03	12/03/19 08:13

Russell Kuhfeld  
Quality Officer - 12/6/2019



### Quality Control Terpene Analysis (Continued)

Batch: 1949010 - 215-Useable (Continued)

Blank(1949010-BLK1)						
Analyte	Result	LOQ	Units	%Recovery Limits	Extracted	Analyzed
Camphor	< LOQ	4.000E-4	%		12/02/19 12:03	12/03/19 08:13
3-Carene	< LOQ	4.000E-4	%		12/02/19 12:03	12/03/19 08:13
beta-Caryophyllene	< LOQ	4.000E-4	%		12/02/19 12:03	12/03/19 08:13
Caryophyllene Oxide	< LOQ	4.000E-4	%		12/02/19 12:03	12/03/19 08:13
alpha-Cedrene	< LOQ	4.000E-4	%		12/02/19 12:03	12/03/19 08:13
Cedrol	< LOQ	4.000E-4	%		12/02/19 12:03	12/03/19 08:13
Endo-fenchyl alcohol	< LOQ	4.000E-4	%		12/02/19 12:03	12/03/19 08:13
Eucalyptol	< LOQ	4.000E-4	%		12/02/19 12:03	12/03/19 08:13
Fenchone	< LOQ	4.000E-4	%		12/02/19 12:03	12/03/19 08:13
Geraniol	< LOQ	4.000E-4	%		12/02/19 12:03	12/03/19 08:13
Geranyl acetate	< LOQ	4.000E-4	%		12/02/19 12:03	12/03/19 08:13
Guaiol	< LOQ	4.000E-4	%		12/02/19 12:03	12/03/19 08:13
Hexahydrothymol	< LOQ	4.000E-4	%		12/02/19 12:03	12/03/19 08:13
alpha-Humulene	< LOQ	4.000E-4	%		12/02/19 12:03	12/03/19 08:13
Isoborneol	< LOQ	4.000E-4	%		12/02/19 12:03	12/03/19 08:13
Isopulegol	< LOQ	4.000E-4	%		12/02/19 12:03	12/03/19 08:13
Limonene	< LOQ	4.000E-4	%		12/02/19 12:03	12/03/19 08:13
Linalool	< LOQ	4.000E-4	%		12/02/19 12:03	12/03/19 08:13
p-Mentha-1,5-diene	< LOQ	4.000E-4	%		12/02/19 12:03	12/03/19 08:13
beta-Myrcene	< LOQ	4.000E-4	%		12/02/19 12:03	12/03/19 08:13
trans-Nerolidol	< LOQ	4.000E-4	%		12/02/19 12:03	12/03/19 08:13
Ocimene	< LOQ	4.000E-4	%		12/02/19 12:03	12/03/19 08:13
alpha-Pinene	< LOQ	4.000E-4	%		12/02/19 12:03	12/03/19 08:13
beta-Pinene	< LOQ	4.000E-4	%		12/02/19 12:03	12/03/19 08:13
Pulegone	< LOQ	4.000E-4	%		12/02/19 12:03	12/03/19 08:13
Sabinene	< LOQ	4.000E-4	%		12/02/19 12:03	12/03/19 08:13
Sabinene hydrate	< LOQ	4.000E-4	%		12/02/19 12:03	12/03/19 08:13
gamma-Terpinene	< LOQ	4.000E-4	%		12/02/19 12:03	12/03/19 08:13
alpha-Terpinene	< LOQ	4.000E-4	%		12/02/19 12:03	12/03/19 08:13
Terpineol	< LOQ	4.000E-4	%		12/02/19 12:03	12/03/19 08:13
Terpinolene	< LOQ	4.000E-4	%		12/02/19 12:03	12/03/19 08:13
Valencene	< LOQ	4.000E-4	%		12/02/19 12:03	12/03/19 08:13
B Y-Terpineol	< LOQ	4.000E-4	%		12/02/19 12:03	12/03/19 08:13
Nerol	< LOQ	4.000E-4	%		12/02/19 12:03	12/03/19 08:13
A-Terpineol	< LOQ	4.000E-4	%		12/02/19 12:03	12/03/19 08:13
cis-Nerolidol	< LOQ	4.000E-4	%		12/02/19 12:03	12/03/19 08:13
Borneol	< LOQ	4.000E-4	%		12/02/19 12:03	12/03/19 08:13
Ocimene isomer II	< LOQ	4.000E-4	%		12/02/19 12:03	12/03/19 08:13

Russell Kuhfeld  
Quality Officer - 12/6/2019



**Quality Control  
Terpene Analysis (Continued)**

**Batch: 1949010 - 215-Useable (Continued)**

<b>Blank(1949010-BLK1)</b>						
Analyte	Result	LOQ	Units	%Recovery Limits	Extracted	Analyzed
Ocimene isomer I	< LOQ	4.000E-4	%		12/02/19 12:03	12/03/19 08:13

<b>Reference(1949010-SRM1)</b>						
Analyte	% Recovery	LOQ	Units	%Recovery Limits	Extracted	Analyzed
beta-Caryophyllene	90.1	4.000E-4	%	70-130	12/02/19 12:03	12/03/19 08:56
alpha-Humulene	91.6	4.000E-4	%	70-130	12/02/19 12:03	12/03/19 08:56
Limonene	84.5	4.000E-4	%	70-130	12/02/19 12:03	12/03/19 08:56
beta-Myrcene	86.3	4.000E-4	%	70-130	12/02/19 12:03	12/03/19 08:56

**Batch: 1949037 - 103**

<b>Reference(1949037-SRM1)</b>						
Analyte	% Recovery	LOQ	Units	%Recovery Limits	Extracted	Analyzed
Percent Moisture	100		%	80-120	12/03/19 16:16	12/03/19 16:16

<b>Reference(1949037-SRM2)</b>						
Analyte	% Recovery	LOQ	Units	%Recovery Limits	Extracted	Analyzed
Percent Moisture	118		%	80-120	12/03/19 16:16	12/03/19 16:16

*Russell Kuhfeld*

Russell Kuhfeld  
Quality Officer - 12/6/2019